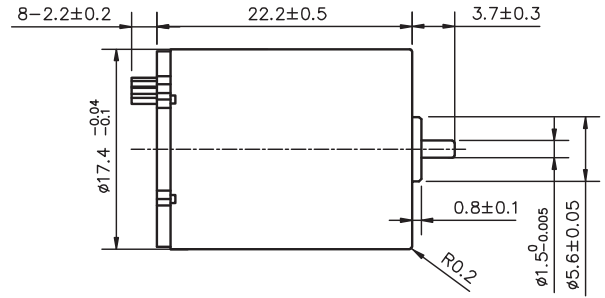
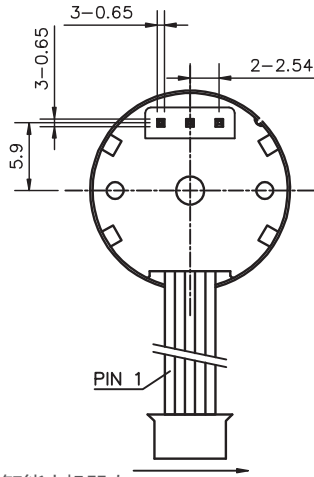


1722RB 空心杯无刷电机

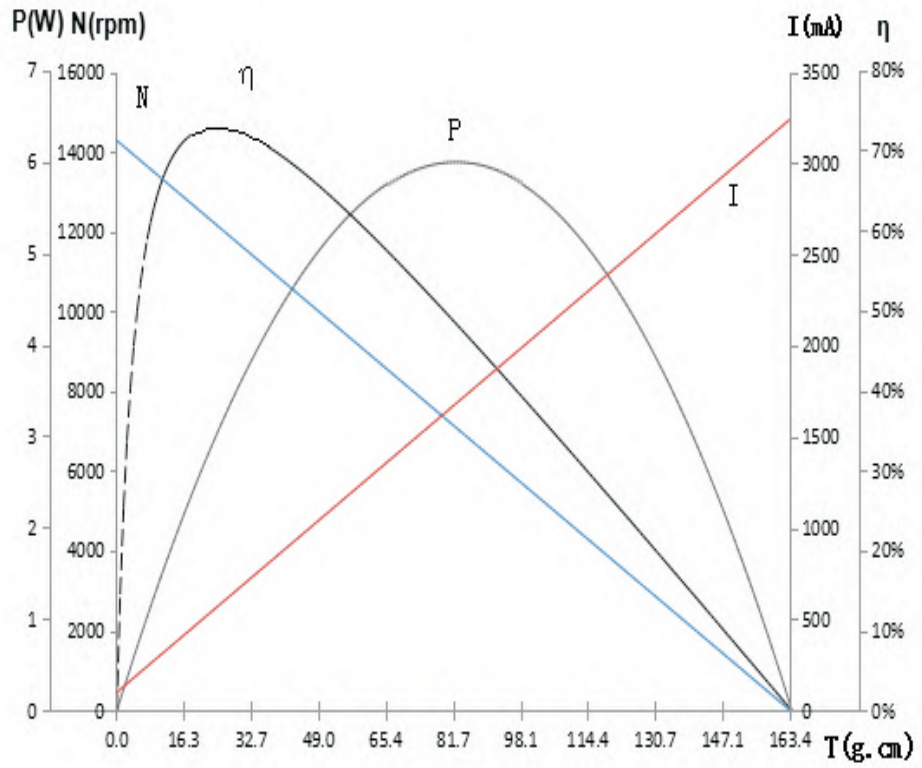


典型应用 Typical Applications: 舵机、智能小机器人

电机参数 (Motor data)		09A	05A	07A	08A	06A
额定电压下数值 (Values at nominal voltage)						
1 额定电压 (Nominal voltage)	v	7.4	7.4	7.4	12	24
2 空载转速 (No load speed)	rpm	14300	20000	25000	25000	23010
3 空载电流 (No load current)	mA	95	140	200	120	80
4 额定转速 (Nominal speed)	rpm	12550	16200	18625	19750	19213
5 额定转矩 (最大连续转矩) (Nominal torque)	mNm	2	5	5	5	5
6 额定电流 (最大连续电流) (Nominal current)	A	0.48	1.54	1.94	1.20	0.56
7 堵转转矩 (Stall torque)	mNm	16.14	26.15	19.53	23.86	29.80
8 堵转电流 (Stall current)	A	3.33	7.55	7.05	5.31	3.05
9 最大效率 (Max efficiency)	%	73	77	73	75	74
电机常数 (Motor constant)						
10 相间电阻 (Terminal resistance)	Ω	2.22	0.98	1.05	2.26	7.88
11 转矩常数 (Torque constant)	mNm/A	4.85	3.46	2.77	4.49	9.77
12 速度常数 (Speed constant)	rpm / V	1932	2703	3378	2083	959

其它特性参数 Other characteristic parameters 09A电机曲线图

- 13 环境温度范围 (Ambient temperature) -10 -40°C
- 14 绕组最高允许温度 (Max permissible winding temperature) 120°C
- 15 最高允许转速 (Max permissible speed) 30000rpm
- 16 电极磁极对数 (Number of the pole pairs) 1
- 17 相数 (Number of pole pairs) 3
- 18 电机质量 (Weight) 26.4g



YTK CO.,LTD.
info@ytk-group.co.jp
Http://www.ytk-group.co.jp