



12v/24v Multifunctional Switch panel Plastic  
Anderson connector 50A x2 , 1-led switch 3P ON-OFF

SF CODE	Switch	Fuse holder	socket
SF50854-4-1P1U	4	15Ax2	power socket*1 3.1A USB*1
SF50854-6-1P1U	6	15Ax3	power socket*1 3.1A USB*1
SF50854-8-1P1P1UV	8	15Ax4	power socket*2 3.1A USB*1 Red led voltmeter*1



12v/24v Multifunctional Switch panel Plastic  
Anderson connector 50A x2 , 1-led switch 3P ON-OFF  
100A main battery switch \*1

SF CODE	Switch	Fuse holder	socket
SF50854-6M-1P	6	15Ax3	power socket*1
SF50854-6M-1U	6	15Ax3	3.1A USB*1
SF50854-8M-1P1P1U	8	15Ax4	power socket*2 3.1A USB*1



SF51123 12V/24V Plastic control box  
box Size: 350x175x90mm  
Blue led 3P ON-OFF Switch x6 (12V 20A / 24V10A DC)  
Power Socket x3 (12V 20A / 24V10A DC)  
Dual Port USB Socket x1 (5V 3.1A DC)  
blue led Voltmeter Socket x1 (6V~30V DC)  
Anderson Connector x2 (50A)  
6way waterproof Fuse Box x1 (100A 32V DC.max)  
4way Bus Bar x2 (150A 32V DC.max) (red/black)  
Fuse : 5A x1, 15A x3, 20A x1, 30A x2  
Wire : 1015 / 10AWG & 1015 / 14AWG  
Dimensions (L x W x H) : 355x180x138 mm (including fuse block height)  
Shell Material : Nylon



12v/24v mini power box  
Anderson Connector x1 (50A-Input)  
Anderson Connector x2 (50A-Output)  
USB Type-a x4 (5V 2.4A DC)  
USB Type-c x1 (PD 5.0V~20V, Max : 60W)  
Voltmeter x1 Rating : 6V~30V  
Fuse Box x1 (100A 32V DC.max)  
Fuse : 10A x3, 30A x2  
Wire : 10269 / 8AWG & 10269 / 10AWG & 1015 / 16AWG  
Dimensions (L x W x H) : 140x160x85 mm  
Shell Material : Nylon

SF CODE	details	Battery switch
SF51666-M-1P1P	Power Socket x2	100Ax1
SF51666-1P1P1P	Power Socket x3	/



NEW

Touch screen

Blue-tooth control panel

Control box:  
Switch rating: 12V 10A/24V 10A DC  
Panel rating: Max. Cumulative Amp:60A

SF CODE	details
SF50817-1	control box only
SF50817-2	panel&control box set



Touch control plastic switch panel 6 / 8 way  
SF50800-6/8 capative touch screen& output circuit control  
With control box, only with small mounting hole  
Small mounting hole for your boat, car, RV, etc  
DC 12V/24V

WEB:WWW.sunfinemarine.com



8 gang switch panel system  
Green Or Blue backing ground for choice  
Input voltage 12/24V  
Max to power 1200W(24V). 600W(12V), Max amp 60A

SF NO.	Background light color
SF52111-8AP-BL	BLUE
SF52111-8AP-G	GREEN



8 gang switch panel system  
ON/OFF switch to control the background lighting color  
automatically adjust the light brightness  
80pcs DIY icon sticker labels

SF NO.	color
SF52211-8A-3C	RGB 3colors adjustable
SF52211-8A-7C	7color adjustable
SF52211-8A-7C/APP	7color adjustable, with APP bluetooth control

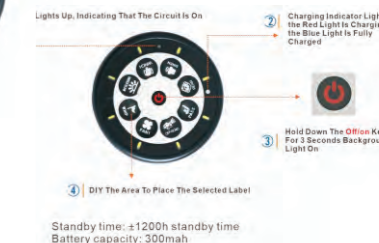


Touch control plastic switch panel 4 / 6 / 8 way  
SF50852-4/6/8 touch control switches  
With breakers 10A  
white LED when OFF; blue LED when ON  
DC 12V/24V



NEW

SF52211-8P-7C/B model  
ON/OFF switch to control the lighting color(R/G/B etc 7color)  
automatically adjust the lighting brightness  
Input voltage 12/24V  
Max to power 1200W(24V). 600W(12V), Max amp 60A



SF52214 Wireless remote control panel  
Control 8Auxiliary led lights or electrical devices  
80pcs labels for DIY panel  
Input Voltage:12/24V  
Max to power 1200W (24V), 600W(12V), max amp 60A  
Kit include:  
Control panel & circuit controller case  
Mounting brackets& magneticv patch  
Power cable, and charging cable  
Circuit prote

NEW



SF52117 12V Universal control panel  
Specification:  
Voltage: 12V, Max watt: 600W  
Switch panel: 6gang  
Relay: 40Ax6pcs  
Fuse: 30Ax1; 20Ax3, 15Ax2  
Applicatin : Trucks/Rvs/Modified cars/Yachts/Jeep, etc





AC/DC Aluminum switch panel 7+3 Way with sockets  
SF50809-7/3S1U1PD  
2\*AC switch+8\*DC switch red/blue LED  
6~30V/0~50A dual Amp.&volt.&50A current shunt+3.1A USB+power  
with breakers 10A\*6/15A\*1/30A\*2  
AC220V/DC 12V/24V



Aluminum switch panel 5+1 Way with sockets  
SF50809-5/1SIUIPD  
6\*switch red/blue LED+6~30V/0~50A dual Amp.&volt.  
&50A current shunt +3.1A dual USB+power socket  
with breakers 10A\*4/15A\*1/30A\*1  
DC 12V/24V



Aluminum switch panel 1/3/4/6/8 Way, Horizontal  
SF50758-1H 1\*switch with breaker 10A\*1  
SF50758-3H 3\*switch with breakers 5A\*1/10A\*1/15A\*1  
SF50758-4H 4\*switch with breakers 5A\*2/10A\*1/15A\*1  
SF50758-6H 6\*switch with breakers 5A\*3/10A\*2/15A\*1  
SF50758-8H 8\*switch with breakers 5A\*4/10A\*2/15A\*2  
DC 12V/24V



Aluminum switch panel 1/3/4/6/8 Way, Vertical  
SF50752-1Z 1\*switch with breaker 10A\*1  
SF50752-3Z 3\*switch with breakers 5A\*1/10A\*1/15A\*1  
SF50752-4Z 4\*switch with breakers 5A\*2/10A\*1/15A\*1  
SF50752-6Z 6\*switch with breakers 5A\*3/10A\*2/15A\*1  
SF50752-8Z 8\*switch with breakers 5A\*4/10A\*2/15A\*2  
DC 12V/24V



3 Way Aluminum switch panel  
SF50803-3H1U1V  
3\*switch+3.1A USB+Blue LED voltmeter  
with fuse holder15A\*2  
DC 12V/24V



6 Way Aluminum switch panel  
SF50803-6H1P1U1V  
6\*switch+power socket+3.1A USB+blue-led voltmeter  
with fuse holder15A\*3  
DC 12V/24V



Aluminum switch panel 6 Way with sockets  
SF50806-6H1P1U1V  
6\*switch+power socket+3.1A USB+blue-led voltmeter  
with breakers 5A\*3/10A\*2/15A\*1  
DC 12V/24V



Aluminum switch panel 2/4/6/8 Way  
SF50851-2/4/6/8-L1 (1LED switch)  
SF50851-2/4/6/8-L2 (2LED switch)  
DC 12V/24V Blue or green , white, lighting for choice

Aluminum switch panel 2/4/6/8 Way with sockets  
SF50851-2S/4S/6S/8S-L1 (1LED switch+ 1 socket)  
SF50851-2S/4S/6S/8S-L2 (2LED switch+ 1 socket)  
DC 12V/24V Blue or green , white, lighting for choice  
Sockets: power socket, usb, voltmeter, etc



4 Way Plastic switch panel  
SF50802-4H1P1U  
4\*switch+power socket+3.1A USB  
with fuse holder15A\*2  
DC 12V/24V



6 Way Plastic switch panel  
SF50802-6H1P1U1V  
6\*switch+power socket+3.1A USB+blue-led voltmeter  
with fuse holder15A\*3  
DC 12V/24V



8Way Plastic switch panel  
SF50802-8H1P1U1V  
8\*switch+2\*power socket+3.1A USB+blue-led voltmeter  
with fuse holder15A\*3  
DC 12V/24V



SF50767-1H 1\*switch with fuse 10A\*1  
SF50767-3H 3\*switch with fuses 5A\*1/10A\*1/15A\*1  
SF50767-4H 4\*switch with fuses 5A\*2/10A\*1/15A\*1  
SF50767-6H 6\*switch with fuses 5A\*3/10A\*2/15A\*1  
SF50767-8H 8\*switch with fuses 5A\*4/10A\*2/15A\*2  
DC 12V/24V



SF50762-1Z 1\*switch with fuse 10A\*1  
SF50762-3Z 3\*switch with fuses 5A\*1/10A\*1/15A\*1  
SF50762-4Z 4\*switch with fuses 5A\*2/10A\*1/15A\*1  
SF50762-6Z 6\*switch with fuses 5A\*3/10A\*2/15A\*1  
SF50762-8Z 8\*switch with fuses 5A\*4/10A\*2/15A\*2  
DC 12V/24V



Aluminum switch panel 5/7 Way, with sockets, Horizontal  
SF50758-5HS 5\*switch+power socket  
SF50758-5HU 5\*switch +3.1A USB  
SF50758-5HV 5\*switch +Voltmeter  
with breakers 5A\*3/10A\*2/15A\*1  
SF50758-7HS 7\*switch+power socket  
SF50758-7HU 7\*switch +3.1A USB  
SF50758-7HV 7\*switch +Voltmeter  
with breakers 5A\*4/10A\*2/15A\*2  
DC 12V/24V

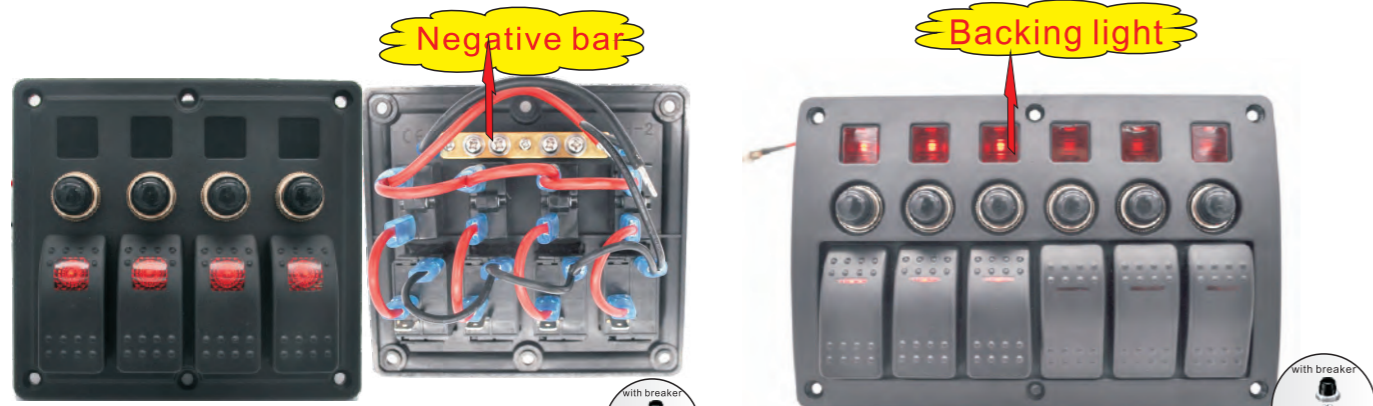


Aluminum switch panel 5/7 Way, with sockets, Vertical  
SF50752-5ZS 5\*switch+power socket  
SF50752-5ZU 5\*switch +3.1A USB  
SF50752-5ZV 5\*switch +Voltmeter  
with breakers 5A\*3/10A\*2/15A\*1  
SF50752-7ZS 7\*switch+power socket  
SF50752-7ZU 7\*switch +3.1A USB  
SF50752-7ZV 7\*switch +Voltmeter  
with breakers 5A\*4/10A\*2/15A\*2  
DC 12V/24V

SF50767-5HS 5\*switch+power socket  
SF50767-5HU 5\*switch +3.1A USB  
SF50767-5HV 5\*switch +Voltmeter  
with fuses 5A\*3/10A\*2/15A\*1  
SF50767-7HS 7\*switch+power socket  
SF50767-7HU 7\*switch +3.1A USB  
SF50767-7HV 7\*switch +Voltmeter  
with fuses 5A\*4/10A\*2/15A\*2  
DC 12V/24V



SF50762-5ZS 5\*switch+power socket  
SF50762-5ZU 5\*switch +3.1A USB  
SF50762-5ZV 5\*switch +Voltmeter  
with fuses 5A\*3/10A\*2/15A\*1  
SF50762-7ZS 7\*switch+power socket  
SF50762-7ZU 7\*switch +3.1A USB  
SF50762-7ZV 7\*switch +Voltmeter  
with fuses 5A\*4/10A\*2/15A\*2  
DC 12V/24V



Plastic switch panel 4 /6 /8 Way, with negative bar  
 SF50850-4 4\* switches+breakers 5A\*2/10A\*1/15A\*1  
 SF50850-6 6\* switches+breakers 5A\*3/10A\*2/15A\*1  
 SF50850-8 8\* switches+breakers 5A\*4/10A\*2/15A\*2  
 DC 12V/24V

(if no need negative bar, use SF code SF50850-4N/6N/8N)

Plastic switch panel 4 /6 /8 Way  
 SF50805-4 4\* switches+breakers 5A\*2/10A\*1/15A\*1  
 SF50805-6 6\* switches+breakers 5A\*3/10A\*2/15A\*1  
 SF50805-8 8\* switches+breakers 5A\*4/10A\*2/15A\*2  
 DC 12V/24V



Plastic switch panel 4 /6 /8 Way  
 SF50735-4 4\* switches+breakers 5A\*2/10A\*1/15A\*1  
 SF50735-6 6\* switches+breakers 5A\*3/10A\*2/15A\*1  
 SF50735-8 8\* switches+breakers 5A\*4/10A\*2/15A\*2  
 SF50737-4 4\* switches+fuses 5A\*2/10A\*1/15A\*1  
 SF50737-6 6\* switches+fuses 5A\*3/10A\*2/15A\*1  
 SF50737-8 8\* switches+fuses 5A\*4/10A\*2/15A\*2  
 DC 12V/24V

Plastic switch panel 4 /6 /8 Way  
 SF50739-4 4\* switches+breakers 5A\*2/10A\*1/15A\*1  
 SF50739-6 6\* switches+breakers 5A\*3/10A\*2/15A\*1  
 SF50739-8 8\* switches+breakers 5A\*4/10A\*2/15A\*2  
 SF50741-4 4\* switches+fuses 5A\*2/10A\*1/15A\*1  
 SF50741-6 6\* switches+fuses 5A\*3/10A\*2/15A\*1  
 SF50741-8 8\* switches+fuses 5A\*4/10A\*2/15A\*2  
 DC 12V/24V



Plastic switch panel 4 /6 /8 Way  
 SF50743-4 4\* switches+breakers 5A\*2/10A\*1/15A\*1  
 SF50743-6 6\* switches+breakers 5A\*3/10A\*2/15A\*1  
 SF50743-8 8\* switches+breakers 5A\*4/10A\*2/15A\*2  
 SF50745-4 4\* switches+fuses 5A\*2/10A\*1/15A\*1  
 SF50745-6 6\* switches+fuses 5A\*3/10A\*2/15A\*1  
 SF50745-8 8\* switches+fuses 5A\*4/10A\*2/15A\*2  
 DC 12V/24V

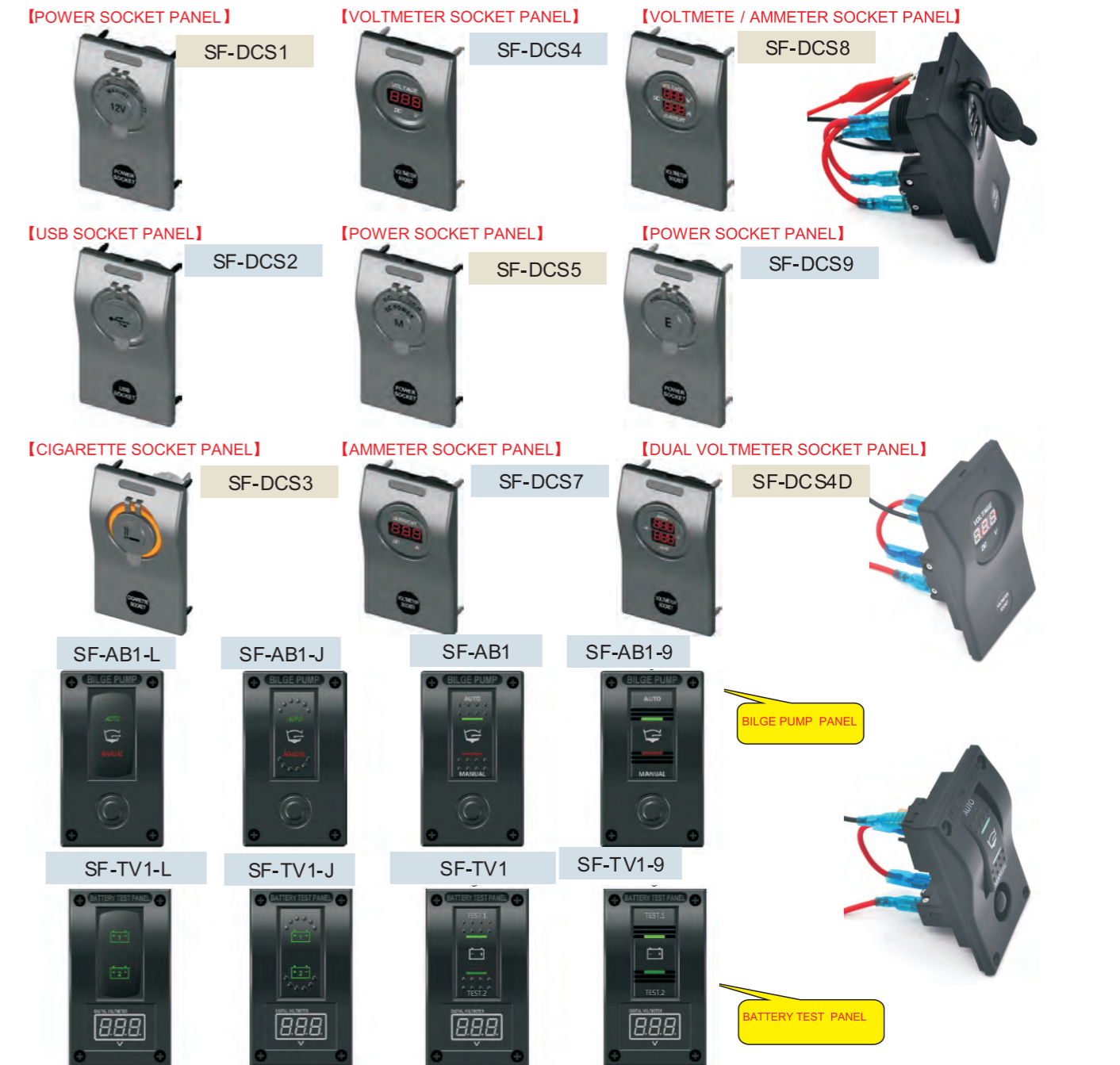
Plastic switch panel 4 /6 /8 Way ,with backing light  
 SF50748-4 4\* switches+breakers 5A\*2/10A\*1/15A\*1  
 SF50748-6 6\* switches+breakers 5A\*3/10A\*2/15A\*1  
 SF50748-8 8\* switches+breakers 5A\*4/10A\*2/15A\*2  
 SF50749-4 4\* switches+fuses 5A\*2/10A\*1/15A\*1  
 SF50749-6 6\* switches+fuses 5A\*3/10A\*2/15A\*1  
 SF50749-8 8\* switches+fuses 5A\*4/10A\*2/15A\*2  
 DC 12V/24V

Small panels can be mixed with SF50743/SF50745/SF50748/SF50749

Small Switch Panels

Size of Panel: 60mm (W) X 100mm (H);With rubber pad, S.S screw

SF No.	SWITCH PANEL	Circuit breaker	Details
SF-AB1	Bilge Pump Panel	10A	Bilge switch on-off-(on) 2green/red led
SF-TV1	Battery Test Panel	/	Battery switch on-off-on 2 green-led & Voltmeter 5~30V
SF-DCS1	Power Panel	15A	power socket
SF-DCS2	USB Panel	5A	3.1A dual port USB
SF-DCS3	Cigarette Panel	10A	Cigarette Socket &Lighter
SF-DCS4	Voltmeter Panel	5A	Voltmeter 5~30V
SF-DCS4D	Dual voltmeter Panel	5A	Dual voltmeter 10~60V
SF-DCS5	Merit Panel	15A	Merit socket
SF-DCS7	Ammeter Panel	5A	Ammeter 0~10A
SF-DCS8	Volt.&Amp. Meter Panel	5A	Volt.&Amp. Meter 5~30V, 0~10A
SF-DCS9	Engel Panel	15A	Engel socket





Plastic Toggle switch panel 4/6 Way  
 SF50770-4 4\* toggle switches+breakers 5A\*2/10A\*1/15A\*1  
 SF50770-6 6\* toggle switches+breakers 5A\*3/10A\*2/15A\*1  
 SF50771-4 4\* toggleswitches+fuses 5A\*2/10A\*1/15A\*1  
 SF50771-6 6\* toggle switches+fuses 5A\*3/10A\*2/15A\*1  
 DC 12V/24V



Plastic Toggle switch panel 4 way, with 2 sockets  
 With breakers or fuses: 5A\*2/10A\*2/15A\*1  
 SF50770-4S1S1 4\* toggle+2\*power socket+Breakers  
 SF50770-4S1S2 4\* toggle+power +3.1A usb +Breakers  
 SF50770-4S1S4 4\* toggle+power +voltmeter+Breakers  
 SF50770-4S2S4 4\* toggle+3.1A usb +voltmeter +Breakers  
 SF50771-4S1S1 4\* toggle+2\*power socket+fuses  
 SF50771-4S1S2 4\* toggle+power +3.1A usb +fuses  
 SF50771-4S1S4 4\* toggle+power +voltmeter+fuses  
 SF50771-4S2S4 4\* toggle +3.1A usb +voltmeter +fuses



Breaker switch panel 4/6 Way  
 SF50774-4 4 breaker switch  
 SF50774-6 6 breaker switch  
 DC 12V/24V



Breaker switch panel with sockets, with 1 breaker switch (resetable)  
 SF50774-1P1U 1 switch+power socket+dual USB 3.1A  
 SF50774-1P1U1V 1switch+power socket+dual USB 3.1A+voltmeter  
 DC 12V/24V  
 other sockets combination available



SF52114 Multi-Functions Panel 12V/24V  
 Dual USB Socket + Voltmeter + 12V Outlet + 5\*Switches  
 USB socket output: DC 5V / 4.2A;  
 Power outlet: DC 12V;  
 Voltmeter display range: 0 - 24V  
 Size: 150\*105mm; cutting size:135\*90mm



SF52113 5 Gang Rocker Switch Panel  
 12-24V 20A , On/Off 3 Pin switch



SF52112-4/6 Gang Rocker Switch Box  
 12-24V 20A , On/Off switch, [40 Amp Max.]  
 Simplified Wiring:Only one power and ground wire per circuit.  
 Superior Design:Durable aluminum housing, wear-resistant Adjustable bracket  
 Safety Protection:External 40A fuse can protect the circuit



SF52120 Multi-Functions Panel  
 4.2A Dual USB+ Voltmeter + 12V Outlet + 8\*Switches  
 size:150\*110mm



12V/24V Small Switch panel  
 SF54510-BP Bilge pump panel,on-off-(on), 2leds  
 SF54510-BPA Bilge pump with Alarm panelon-off-(on), 2leds  
 SF54510-DW Deck wash panel,on-off,1led  
 SF54510-WL Windlass panel,(on)-off-(on),2leds  
 SF54511-WP Wiper panel,on-on-on ,1led  
 with 20A circuit breaker

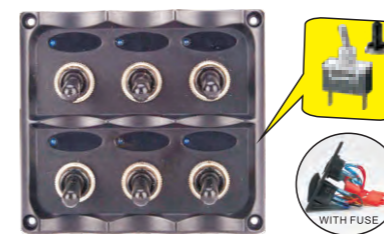


Default panel pattern  
 Laser etch on covers for lighting

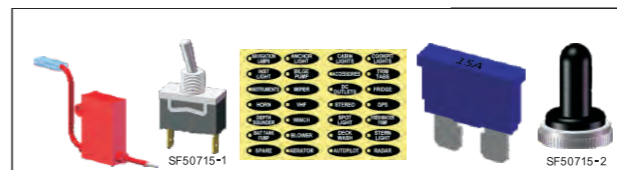


Black panel also available

Plastic laser etched switch panel 4/6/8 Way  
 SF50720-4 4\* switches+breakers 5A\*2/10A\*1/15A\*1  
 SF50720-6 6\* switches+breakers 5A\*3/10A\*2/15A\*1  
 SF50720-8 8\* switches+breakers 5A\*4/10A\*2/15A\*2  
 SF50721-4 4\* switches+fuses 5A\*2/10A\*1/15A\*1  
 SF50721-6 6\* switches+fuses 5A\*3/10A\*2/15A\*1  
 SF50721-8 8\* switches+fuses 5A\*4/10A\*2/15A\*2  
 DC 12V/24V



Toggle switch panel 4/6 Way  
 SF50772-4 4\*switch+fuses 15A\*2  
 SF50772-6 6\*switch+ fuses 15A\*3  
 DC 12V/24V



Toggle switch panel 3/5 Way with sockets  
 SF50772-3S1 3\*switch+power socket+fuses 15A\*2  
 SF50772-3S2 3\*switch+3.1A usb+fuses 15A\*2  
 SF50772-3S4 3\*switch+voltmeter+fuses 15A\*2  
 SF50772-5S1 5\*switch+power socket+fuses 15A\*3  
 SF50772-5S2 5\*switch+3.1A usb+fuses 15A\*3  
 SF50772-5S4 5\*switch+voltmeter+fuses 15A\*3  
 DC 12V/24V



SF52130-3/6 3/6gang panel, with waterproof boot on switch  
 SF52130-3N/6N 3/6gang panel,without waterproof boot on switch  
 Rating: 6A 30V DC, 2P switch on-off  
 3gang with 3\*fuse holder 5A; 6gang with 6\*fuse holder 5A;



Plastic switch panel 4/6/8 Way  
 SF50722-4 3\* switches+4.2AUSB with voltmeter+breakers 5A\*2/10A\*1/15A\*1  
 SF50722-6 5\* switches+4.2AUSB with voltmeter+breakers 5A\*3/10A\*2/15A\*1  
 SF50722-8 7\* switches+4.2AUSB with voltmeter+breakers 5A\*4/10A\*2/15A\*2  
 SF50723-4 3\* switches+4.2AUSB with voltmeter++fuses 5A\*2/10A\*1/15A\*1  
 SF50723-6 5\* switches+4.2AUSB with voltmeter+fuses 5A\*3/10A\*2/15A\*1  
 SF50723-8 7\* switches+4.2AUSB with voltmeter++fuses 5A\*4/10A\*2/15A\*2  
 DC 12V/24V



- Running Light
- Bilge Pump
- Bilge Blower
- Cabin Light
- Windshield Wiper
- Anchor Light
- Sticker label



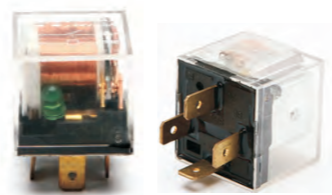
28 x 28 x 25.5(+16)  
12V 30/40 Amp 5pin SPDT Automotive Relay

SF NO.	Current	Backing	with or without socket
SF52101-12V-30A	30A	/	
SF52101-12V-40A	40A	/	
SF52101-12V-PB-30A	30A	Plastic	With socket: SF52101S
SF52101-12V-PB-40A	40A	backrest	For exp.: SF52101S-12V-30A
SF52101-12V-IB-30A	30A	Iron	
SF52101-12V-IB-40A	40A	backrest	



Mini relay, with fuse  
12V, SPST, 4PINS, with Iron backrest

SF NO.	Details
SF52102-12V-30AF	30A, with fuse
SF52102-12V-30AFS	30A, with fuse & socket



12V/24V 40 Amp Automotive Relay

SF NO.	Current
SF52105-12V-4P	40A, 4Pin
SF52105-24V-4P	40A, 4Pin
SF52105-12V-5P	40A, 5Pin
SF52105-24V-5P	40A, 5Pin



SF52404 Mini blade fuse  
Voltage rating: 32VDC  
Amp: 1A ~40A



SF51405 ATO/ATC Standard blade fuse  
Voltage rating: 32VDC  
Amp: 1A ~40A



SF52405 Maxi blade fuse  
Voltage rating: 32VDC or less  
Amp: 20A~100A



SF51506 Manual blade reset  
Voltage rating: 28V DC  
Amp: 5A~30A



SF52110 12-Slot Relay-fuse Box  
Can fit for 1x 4pin Relay, 5x 5 pin relay, 6 x ATC /ATO blade,  
With 41pcs Metallic Pins  
Material: PA66  
Size: 81.1 X 67.5X175.1MM (WXHXL)  
Specification fuse strip: 5~40A  
Fixed hole distance: 157.2~163.6mm  
Package not include fuses &relays



12-Slot Relay-fuse Box  
ATC /ATO fuse 5A 10A 15A 20A 30A 40A, each 1pc  
With Metallic Pins  
For Automotive and Marine Engine Bay  
Material: PA66  
Size: 81.1 X 67.5X175.1MM (WXHXL)

SF NO.	Relay Details
SF52110-K1	1x 40A 4pin Relay, 5x 40A 5pin relay
SF52110-K2	1x 40A 4pin Relay, 5x 40A 4pin relay



Waterproof mini relay  
12V, 4PINS

SF NO.	Switching Current
SF52103-12V-40A	40A, with socket



SF52106 relay  
12V, 40A, 4Pin



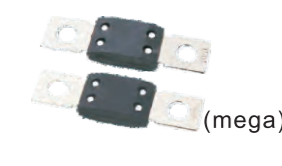
SF52104 12V 5pin 40A Relay



SF50675 ANL Fuse  
\*Body Material: Plastic  
\*Metal Element: Brass/copper with gold plating  
Amp Rating: 35~500A  
Voltage: 32V DC



SF52676 ANL (MIDI) Fuse  
AMP:30A-200A  
Voltage:58VDC/125VDC MAX



SF51675 Auto stud fuse  
Breaking Rating: 2000A@32V DC  
Terminal material: Zinc Alloy/copper  
Voltage rating: 32VDC  
Amp: 40A~500A



SF52672 ANL fuse holder  
AMP:30A-500A  
Voltage:DC125VMAX



SF52680 ANL Fuse holder



SF51675B Auto stud fuse block



SF50688-3 ANL Fuse Block  
\*0/4 GA IN, 0/4GA OUT



SF52671 ANS- fuse holder  
AMP : 30A-200A  
Voltage : DC125V MAX



SF52678-1 ANL fuse holder



SF52678-2 ANL fuse holder



SF52673 ANS Fuse holder



SF52679-1 ANL fuse holder



SF52679-2 ANL fuse holder



SF52681 ANL+Mini ANL Fuse holder



SF51606 Automatic blade reset  
Voltage rating: 14V DC  
Amp: 5A~30A



SF51402-120A  
120PCS ATO fuse assortment  
5/10/15/20/25/30A each 20pcs



SF51402-120M  
120PCS Mini fuse assortment  
5/10/15/20/25/30A each 20pcs



In-line fuse holder  
Water resistance Fuse not included

SF No.	For fuse	For Wire size
SF52420	Mini blade fuse	12~22# AWG
SF52421 (red)	ATC blade fuse	12~22# AWG
SF52422	ATC blade fuse	12~22# AWG
SF52423	Max blade fuse	8~16# AWG



6way fuse block  
For ATO/ATC fuse  
fuse not included

SF NO.	with/without wire
SF51690	no wire
SF51690W	With wired (size customized)

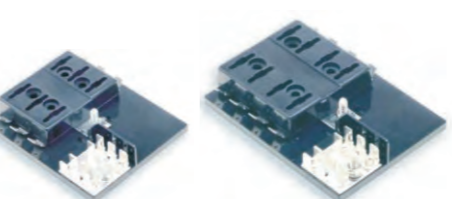


Dual-slot Fuse Holder

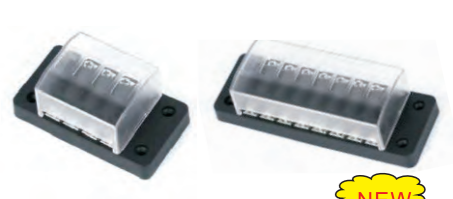
SF NO.	Fuse type
SF51691-1	For Mini
SF51691-2	for MICRO2
SF51691-3	For ATS
SF51691-4	For ATC



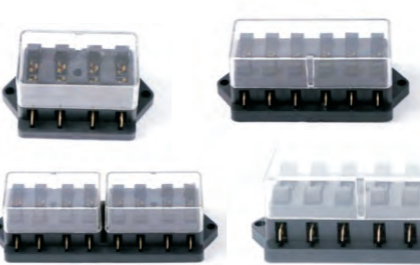
SF51686-6W /8W/ 10W/ 12W  
Blade fuse block 6way, 8way, 10way, 12way



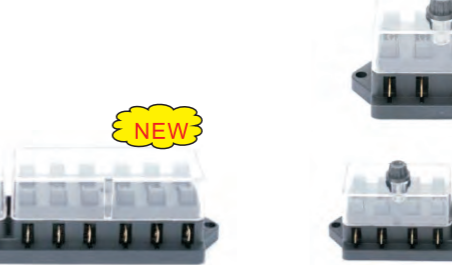
SF50690-6W/ 8W/ 10W/ 12W  
In line fuse box for blade auto fuse  
For 6way, 8way, 10way, 12way



SF51685-4W/ 6W /8W/ 10W/ 12W  
Blade fuse block 4way~12way



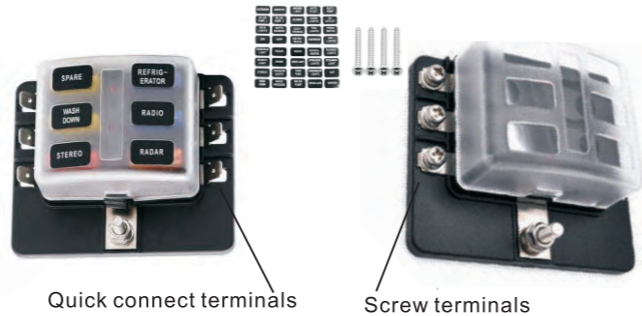
with clip-in cover  
SF51684-2C/4C/6C/8C/10C/12C  
Blade fuse block with clip-in cover  
for 2way ~12way



with screw-in cover  
SF51684-2S/4S/6S/8S/10S/12S  
Blade fuse block with screw-in cover  
for 2way ~12way



SF50702-6/12 Fuse block with negative bar  
6WAY, 12WAY available, with indication light



SF50693-6B /8B /10B/ 12B Fuse block (Screw terminals)  
SF50693-6Q /8Q /10Q/ 12Q Fuse block (Quick terminals)  
6WAY/8WAY/10WAY/ 12WAY available, with indication light



SF51425 6\*30mm Glass fuse  
Fast acting , 2~30A  
(30A is Ceramics fuse)



SF51425-12PCS 6\*30mm Glass fuse pack  
Fast acting  
2 A , 5A, 10A, 15A, 20A, 30A EACH 2PCS,  
12PCS/PACK  
(30A is Ceramics fuse)



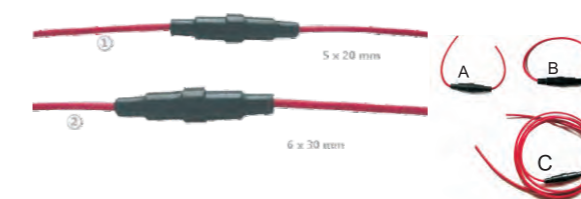
SF51402-1B520 glass fuse size 5\*20mm  
SF51402-1B630 glass fuse size 6\*30mm  
5A/10A/15A/20A/25A/30A each 20pcs  
120PCS Glass Fuse assortment



SF51693-6A /12A Fuse block  
SF51693-6B /12B Fuse block with negative  
6WAY, 12WAY available



SF52693-6A/12A 6/12 way fuse block  
SF52693-6B/12B 6/12 way fuse block  
with waterproof cover  
Accepts ATO or ATC fuse 1A to 20A



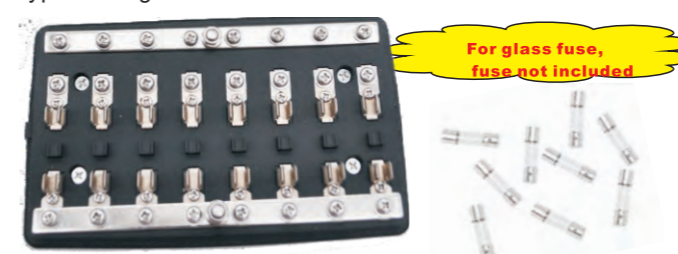
SF52431-1 for 5\*20mm glass fuse holder  
SF52431-2 for 6\*30mm glass fuse holder  
Wire size: 16AWG, 18AWG, 20AWG, 22AWG for choice  
Type A&B: wire length: 22cm Totally  
Type C: Length customized



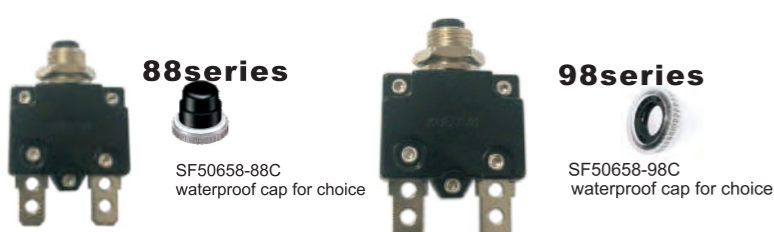
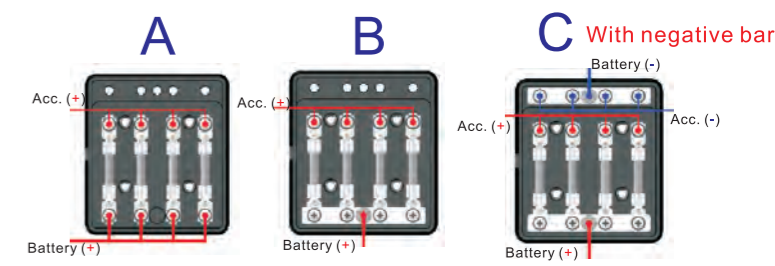
SF52431-1 for 5\*20mm glass fuse holder  
SF52431-2 for 6\*30mm glass fuse holder



SF51788 Inline Fuse Holder  
fuse & wire is not included



SF50731-4A/ 6A /8A Glass fuse block,  
SF50731-4B/ 6B /8B Glass fuse block,  
SF50731-4C/ 6C /8C Glass fuse block, with negative bar  
\*FUSE Type: F6.3\*30mm / F6.3\*32mm



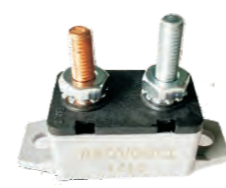
SF50658-88C waterproof cap for choice  
SF50658-98C waterproof cap for choice



SF50658-98H- 40~80A Circuit breaker



SF50730-6/12 6/12 way Circuit Breaker block, with negative bar  
\*For Circuit Breaker Type : 88 series 3~20A



SF50653-3 Manual Reset Stud Type Circuit Breakers  
Single poles, normal closed  
Current & Volt Ratings: 5-50A, 12-28V DC



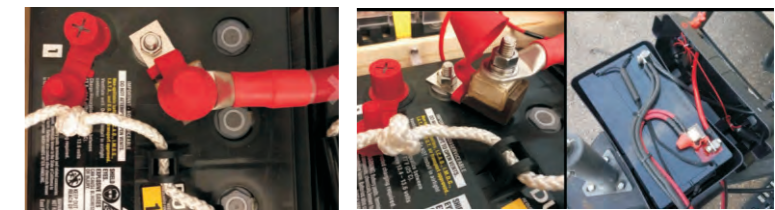
SF50560F High-amp square fuse  
Rated: 58V  
Amp: 50~300A

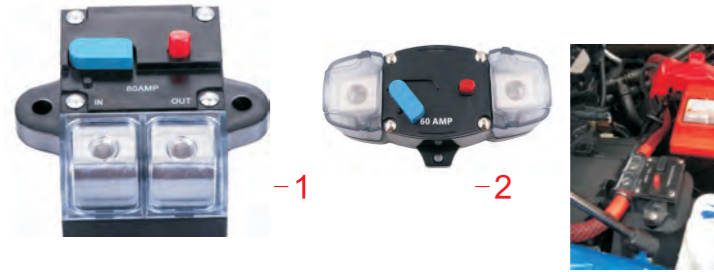


SF50560 Fuse block



SF50653BOOT





Manual Reset Circuit Breaker  
 SF51526-1 80A /100A /150A /200A /250A /300A  
 SF51526-2 50A/ 60A /80A/ 100A/ 150A/ 200A /250A /300A



SF50526 Manual Reset Circuit Breaker  
 Power Rating: 60A 80A 100A 140A 150A 200A 250A 300A



Distribution bar/ Busbar  
 Continuous rating: 130A AC/150A DC  
 Max Voltage: 300V AC/48V DC

SF No.	Positions	with/without cover	Terminal screw	SF No.	Positions	with/without cover	Terminal screw
SF51032-6D	2*6positions		M4	SF51032-2D	2*2positions		M6
SF51032-6DC	2*6positions	with cover	M4	SF51032-2DC	2*2positions	with cover	M6
SF51032-6S	6positions		M4	SF51032-2S	2positions		M6
SF51032-6SC	6positions	with cover	M4	SF51032-2SC	2positions	with cover	M6
SF51032-12D	2*12positions		M4	SF51032-4D	2*4positions		M6
SF51032-12DC	2*12positions	with cover	M4	SF51032-4DC	2*4positions	with cover	M6
SF51032-12S	12positions		M4	SF51032-4S	4positions		M6
SF51032-12SC	12positions	with cover	M4	SF51032-4SC	4positions	with cover	M6



SF50527 DC Circuit breaker  
 20-100A



SF51652 Disconnect / Circuit Breaker  
 Rating: 10-70A, 32VDC



SF50650E-30~300A  
 Economic type high-current breaker  
 30~300A



SF51651-1 automatic breakers  
 SF51651-2 manual breakers  
 SF51651-3 manual with push-to-trip breakers  
 Single pole thermal type breakers  
 Rating: 10-50A, 32VDC



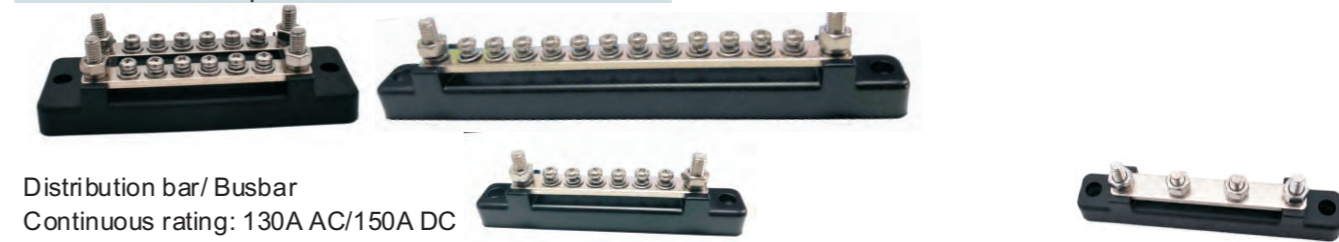
SF50650-31 20-150A wide surface breaker 1/4"-28 Studs  
 SF50650-32 151-200A wide surface breaker 3/8"-16 Studs  
 Wide surface mounting, manual on-off  
 High-current waterproof circuit breaker



SF50650-61 20-150A panel mount breaker  
 SF50650-62 151-200A panel mount breaker  
 panel mounting, manual on-off  
 High-current waterproof circuit breaker



SF50650-91 20-150A surface mount breaker  
 SF50650-92 151-200A surface mount breaker  
 surface mounting, manual on-off  
 High-current waterproof circuit breaker



Distribution bar/ Busbar  
 Continuous rating: 130A AC/150A DC  
 Max Voltage: 300V AC/48V DC

SF No.	Positions	with/without cover	Terminal screw	SF No.	Positions	with/without cover	Terminal screw
SF51033-6D	2*6positions		M4	SF51033-2D	2*2positions		M6
SF51033-6DC	2*6positions	with cover	M4	SF51033-2DC	2*2positions	with cover	M6
SF51033-6S	6positions		M4	SF51033-2S	2positions		M6
SF51033-6SC	6positions	with cover	M4	SF51033-2SC	2positions	with cover	M6
SF51033-12D	2*12positions		M4	SF51033-4D	2*4positions		M6
SF51033-12DC	2*12positions	with cover	M4	SF51033-4DC	2*4positions	with cover	M6
SF51033-12S	12positions		M4	SF51033-4S	4positions		M6
SF51033-12SC	12positions	with cover	M4	SF51033-4SC	4positions	with cover	M6



Distribution bar  
 With dust cover  
 Rating: 150A /300A/450A AC/DC for choice  
 Voltage max operating: 300V AC/ 48V DC

SF CODE (150A)	SF CODE (300A)	SF CODE (450A)	Studs
SF51035-12-150A	SF51035-12-300A	SF51035-12-450A	2xM8 studs & 12xM5 terminal studs
SF51035-4/M8-150A	SF51035-4/M8-300A	SF51035-4/M8-450A	4xM8 studs
SF51035-6/M8-150A	SF51035-6/M8-300A	SF51035-6/M8-450A	6xM8 studs