

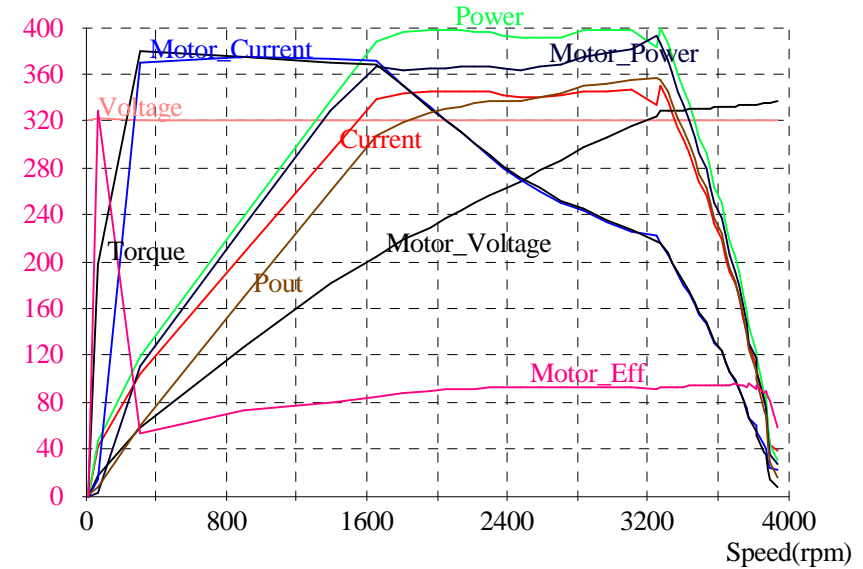
# Changzhou Goldenmotor Technology Co.,Ltd

Customer:  
 ProductName HPM Motor  
 Motor Type: 96V20KW  
 Number:

Voltage: 96V  
 Power rated: 20KW  
 Tester: Liuzhipeng WangChao  
 Test Data: 2023.9.14

\*\*\*\*\*

Voltage V	Current A	Power W	Motor_Voltage V	Motor_Current A	Motor_Power W	Torque N.m	Pout W	Motor_Eff %
120	300	25000	80	450	25000	120	25000	400
108	270	22500	72	405	22500	108	22500	360
96	240	20000	64	360	20000	96	20000	320
84	210	17500	56	315	17500	84	17500	280
72	180	15000	48	270	15000	72	15000	240
60	150	12500	40	225	12500	60	12500	200
48	120	10000	32	180	10000	48	10000	160
36	90	7500	24	135	7500	36	7500	120
24	60	5000	16	90	5000	24	5000	80
12	30	2500	8	45	2500	12	2500	40
0	0	0	0	0	0	0	0	0



State	输入电压 V	输入电流 A	输入功率 W	电机电压 V	电机电流 A	电机功率 W	电机功率因数	电机频率 Hz	转矩 N.m	转速 rpm	输出功率 W	控制器效率 %	电机效率 %	总效率 %	时间 S
No_Load	96.34	28.48	1921	67.33	24.40	1699	0.597	286.82	2.4	3942.1	990.6	88.4	58.3	51.6	0.000
Rated															
Eff_max	96.33	249.6	23907	64.78	249.5	24503	0.875	215.61	65.4	3247.1	22234	102.5	90.7	93.0	53.34
Pout_max	96.33	249.6	23907	64.78	249.5	24503	0.875	215.61	65.4	3247.1	22234	102.5	90.7	93.0	53.34
Torque_max	96.24	77.80	7463	11.73	415.1	6881	0.816	28.52	113.8	310.4	3698	92.2	53.7	49.6	87.55
End	96.21	0.000	0.000	0.000	0.000	0.000	0.000	0.00	0.8	15.0	1.256	0.0	0.0	0.0	91.57