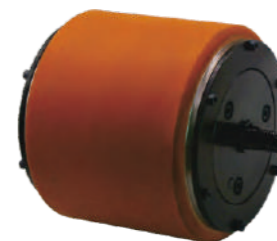




ZLTECH PRODUCT CATALOGUE



专注于机器人电机的制造与应用
FOCUS ON ROBOTICS MOTOR'S MANUFACTURE & APPLICATION

DISTRIBUTOR

YTK CO., LTD.

Address: NAMBA PARKS 19F, 2-10-70 Nambanaka, Naniwa-ku, Osaka-shi, Osaka, 547-0004, Japan

Tel: +81 6 7662 8687

Email: info@ytk-group.co.jp

Website: www.ytk-group.co.jp

深圳中菱科技有限公司

ShenZhen ZhongLing Technology Co., Ltd.

办公地址: 深圳市宝安区西乡街道铁仔路凤凰智谷B栋3楼303

Office Address: 303 Room, Building B, Country Garden Phoenix Wisdom Valley, Gongle Tiezai Rd., Xixiang St., Bao'an Dist, Shenzhen, China

工厂地址: 东莞市黄江镇长龙新风街16号常兴智谷产业园D栋6楼

Factory Address: 6th Floor, Building D, Changxing Zhigu Industrial Park, No. 16 Changlong Xinfeng Street, Huangjiang Town, Dongguan, China

电话: 0755-2979 9302 传真: 0755-2912 4283 邮箱: sales@zlingkj.com

网址: www.zlingkj.com 外贸独立站: www.robotmotor.com

Tel: 0755-2979 9302 Fax: 0755-2912 4283 Email: sales@zlingkj.com

Website: www.zlingkj.com E-commerce Website: www.robotmotor.com



2024中菱科技 产品手册 V24



专注 | 创新 | 厚德 | 务实

CONTENTS

目录

01-02

企业简介
Company Profile



03

企业资质/专利
Qualification
& Patent



04

知名
合作品牌
Cooperation



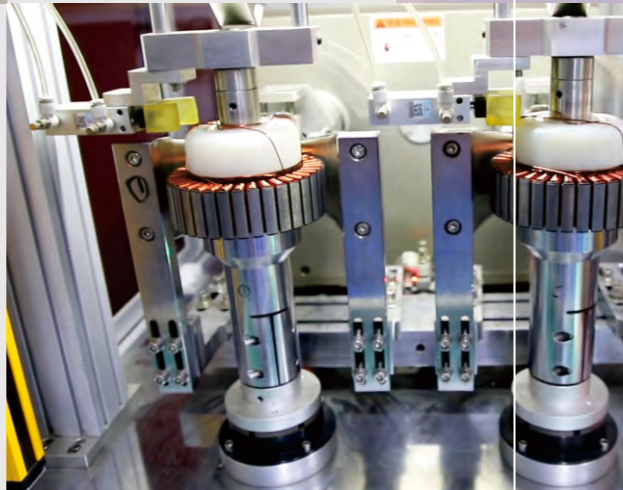
05-06

行业应用
Industry
Application



07-08

生产设备
Production
Equipment



09-10

检测设备
Testing
Equipment



11-22

机器人/AGV
轮毂伺服电机系列
Robot/AGV Hub
Servo Motor Series



23-29

一体化
步进电机系列
Integrated Step-Servo
Motor Series



30-36

低压直流
伺服系列
Low voltage DC
Servo Series



企业简介

Company Profile

深圳中菱科技有限公司自成立以来，一直专注于工业自动化产品，是一家以研发、生产、销售为一体的高新科技公司。

公司汇集了一大批长期从事机电领域的研发精英，锲而不舍地为各工业自动化、机器人厂商提供高性价比的自动化产品，因为我们知道更好的产品来自务实和不断创新。

中菱科技以品质至上为生命线，以服务为灵魂，以创新为原动力，为客户提供一流的产品和解决方案，让每一位合作伙伴都可以放心使用我们的产品。

中菱科技的产品主要包括一体化开/闭环步进电机、机器人AGV轮毂伺服电机、数字式步进系列、数字式闭环步进系列、低压直流伺服系列等，产品已广泛服务并应用于国内外近千家智能制造装备公司，中菱科技愿与您共同发展，一路前行！

Shenzhen ZhongLing Technology Co., Ltd. (ZLTECH) has been focusing on industrial automation product since its establishment. It is a high-tech company integrated R&D, production and sales.

ZLTECH brings together a large number of elite R&D elites who have been engaged in the electromechanical field for a long time, and perseveringly provide high-cost automation product for industrial automation and robot manufacturers, as we know that better product comes from pragmatic and continuous innovation.

ZLTECH takes quality as the lifeline, service as the soul, and innovation as the driving force to provide customer with first-class product and solution, so that every partner could use our product with confidence.

ZLTECH product mainly includes integrated step-servo motor, robot/AGV hub servo motor, digital stepper series, digital closed-loop stepper series, and low voltage DC servo motor series, etc. ZLTECH product has been widely served and applied to nearly a thousand intelligent manufacturing equipment companies at home and abroad, ZLTECH is willing to develop with you and move forward!

FOCUS ON INDUSTRIAL AUTOMATION PRODUCTS

企业愿景：**成为最优秀的自动化品牌，服务于人类的智能制造**

经营理念：**艰苦奋斗、精益求精、追求卓越**

服务理念：**为客户创造价值**

核心价值观：**专注、创新、厚德、务实**

Company Vision:

Become the best automation brand, and serve human intelligent manufacturing

Business Philosophy:

Struggle hard, Strive for perfection, Strive for excellence

Service Concept:

Create value for customer

Core Value:

Focus, innovation, deep virtue, seek truth from facts



企业资质/专利 Qualification & Patent



高新技术企业证书 High-tech Enterprise Certification



ISO 9001



RoHS 2.0认证 RoHS 2.0 Certification



CE认证 CE Certification



发明及实用新型专利证书 Invention and utility patent certificate

国家高新
技术企业

National High-tech Enterprises

ISO 9001认证

ISO 9001 Certification

CE、RoHS 2.0认证

CE, RoHS 2.0 Certification

专利证书
30+

30+ Patent Certification

知名合作品牌 Cooperation



行业应用 Industry Application

智能服务机器人

送餐机器人、商用清扫机器人、楼宇配送机器人、消杀机器人、巡检机器人、农业机器人等

Intelligent Service Robot

Restaurant Service Robot, Commercial Cleaning Robot, Building Delivery Robot, Disinfection Robot, Patrol Robot, Agricultural Robot, Etc.



桌面式小型设备 Desktop Small Device



工业机器人, 特种机床, 医疗装备、电子制造装备、印刷喷绘装备等

Industrial Robot, Special Machine Tool, Medical Equipment, Electronic Manufacturing Equipment, Printing And Inkjet Equipment, Etc.

