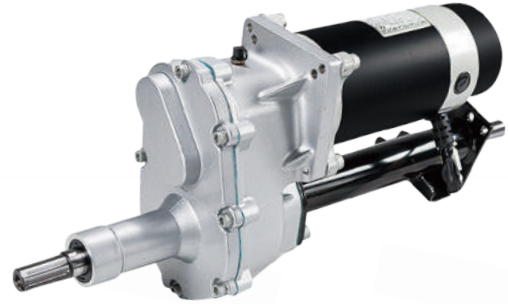


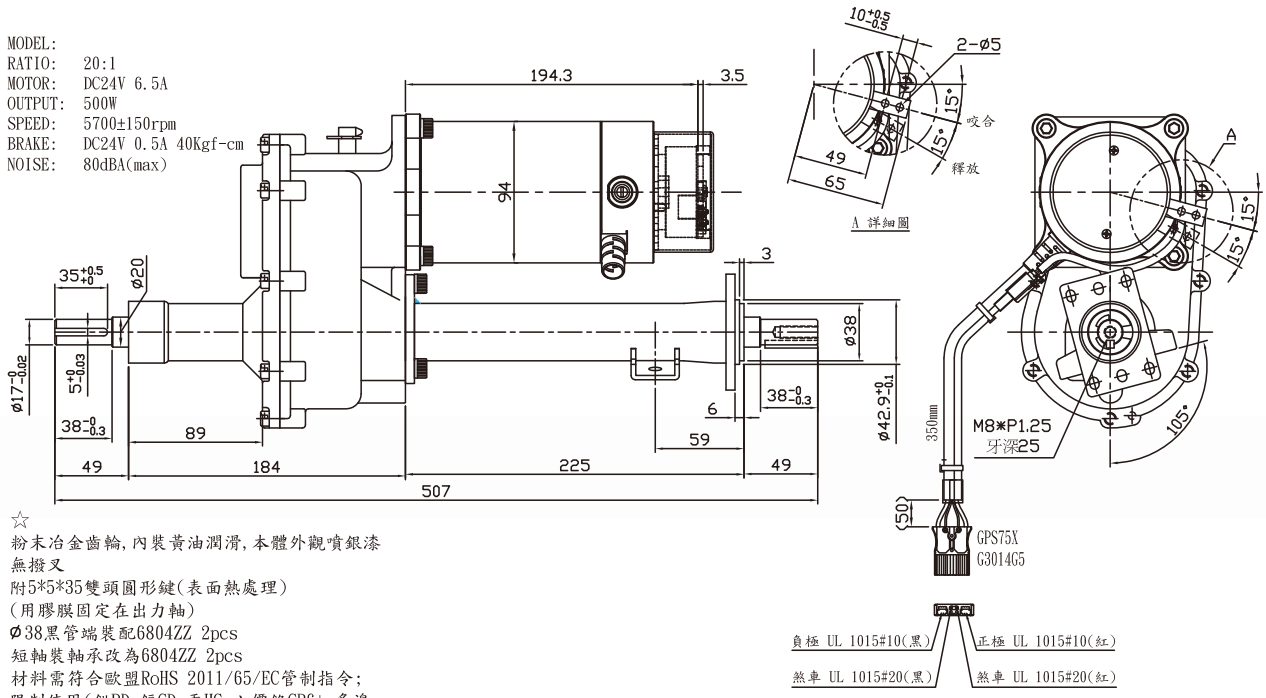
DC Brush Motor

Scooter-SC94 Series (2Poles) 差速器馬達 / Transaxle Motor

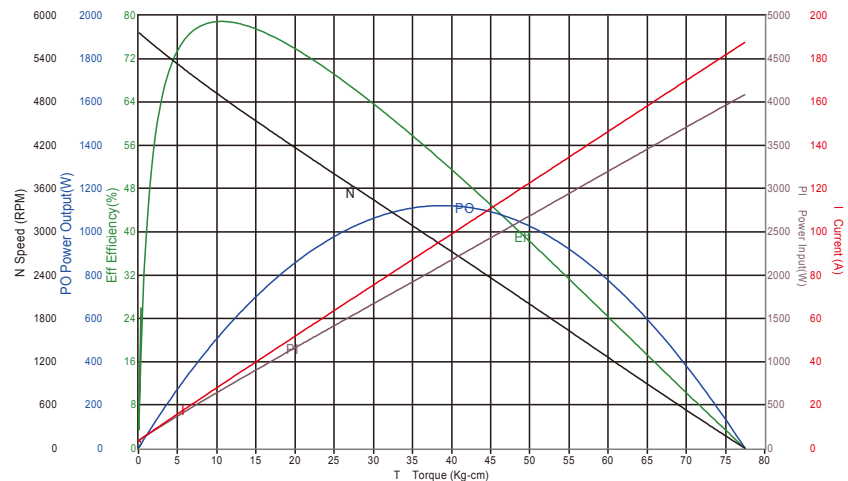


圖紙 / Drawing

MODEL:
RATIO: 20:1
MOTOR: DC24V 6.5A
OUTPUT: 500W
SPEED: 5700±150rpm
BRAKE: DC24V 0.5A 40Kgf-cm
NOISE: 80dBA(max)



曲線圖 / Curve



規格 / Spec.

馬達機種 / Motor Type	Model SC94 系列 (2 極) / SC94 Series (2Poles)
外徑 Diameter	Φ94
IP 等級 IP Degree	IP44
電壓 Voltage	12V / 24V / 36V / 48V
輸出功率 Output Watt	250W ~ 500W
減速比 Gearbox Ratio	14:1 / 18:1 / 20:1 / 22:1 / 26:1 / 30:1 / 40:1 / 51:1
轉速 RPM	2500 - 5700
額定載重 Rated Loading	260KG