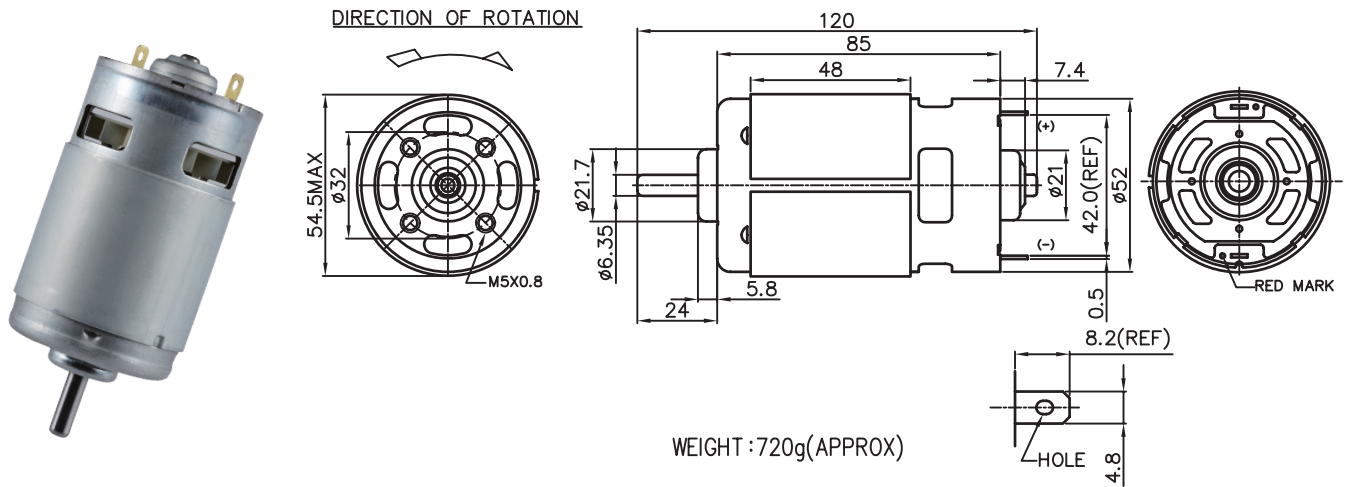


Application : Drill & Screwdriver 、 Electric gate

用途：電動工具、電動門



MODEL	VOLTAGE		NO LOAD		AT MAXIMUM EFFICIENCY					STALL			
	OPERATING RANGE	NOMINAL	SPEED rpm	CURRENT A	SPEED rpm	CURRENT A	TORQUE g-cm	OUTPUT mN-m	EFF %	CURRENT A	TORQUE g-cm	TORQUE mN-m	
997-5036-R	18.0 - 48.0	24.0V CONSTANT	4900	0.42	4198	2.79	1197	117.35	51.60	79.67	25.95	12350	1211
997-7018-R	6.0 - 36.0	12.0V CONSTANT	4900	1.40	4182	5.40	1168	114.51	50.16	78.44	48.12	11499	1127
997B-8007X2-R	12.0 - 22.0	18.0V CONSTANT	18000	6.30	16000	31.72	2620	256.86	430.50	75.07	293.19	26389	2587
997B-6517F-R	24.0 - 40.0	36.0V CONSTANT	15000	2.10	13123	9.28	1955	191.67	263.47	81.01	107.39	23346	2288

馬達的出軸長度及性能參數，EMC 對策可依客人要求做調整，詳情可詢問相關業務人員。
Please inquire your sales representative for output, performance and EMC solution.

