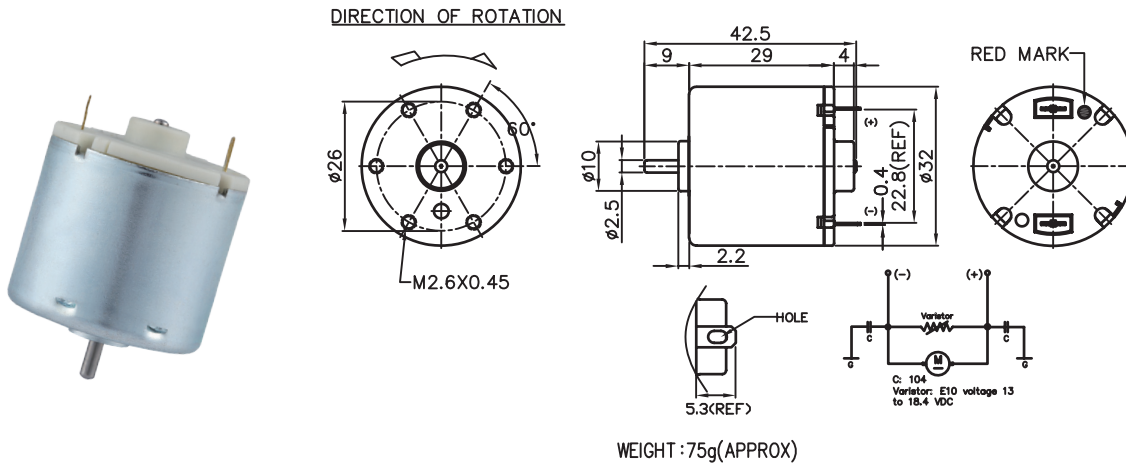


Application : Drill & Screwdriver 、 Tire Pump 、 Power antenna 、 Auto Transformer

用途：電動工具、汽車打氣泵、電動天線、自動變壓器



| MODEL | VOLTAGE | | NO LOAD | | AT MAXIMUM EFFICIENCY | | | | | | STALL | | |
|-------------|-----------------|----------------|---------|---------|-----------------------|---------|--------|--------|------|---------|--------|------|-------|
| | OPERATING RANGE | NOMINAL | SPEED | CURRENT | SPEED | CURRENT | TORQUE | OUTPUT | EFF | CURRENT | TORQUE | | |
| | | | rpm | A | rpm | A | g-cm | mN-m | W | % | A | g-cm | mN-m |
| GRD-12500-R | 12.0-24.0 | 24.0V CONSTANT | 6200 | 0.12 | 4958 | 0.27 | 73.67 | 7.22 | 3.75 | 61.31 | 1.19 | 411 | 40.29 |
| GRD-26125-R | 3.0-9.0 | 9.0V CONSTANT | 9500 | 0.40 | 7746 | 1.39 | 97.96 | 9.60 | 7.79 | 64 | 7.55 | 637 | 62.45 |

馬達的出軸長度及性能參數，EMC 對策可依客人要求做調整，詳情可詢問相關業務人員。
Please inquire your sales representative for output, performance and EMC solution.

